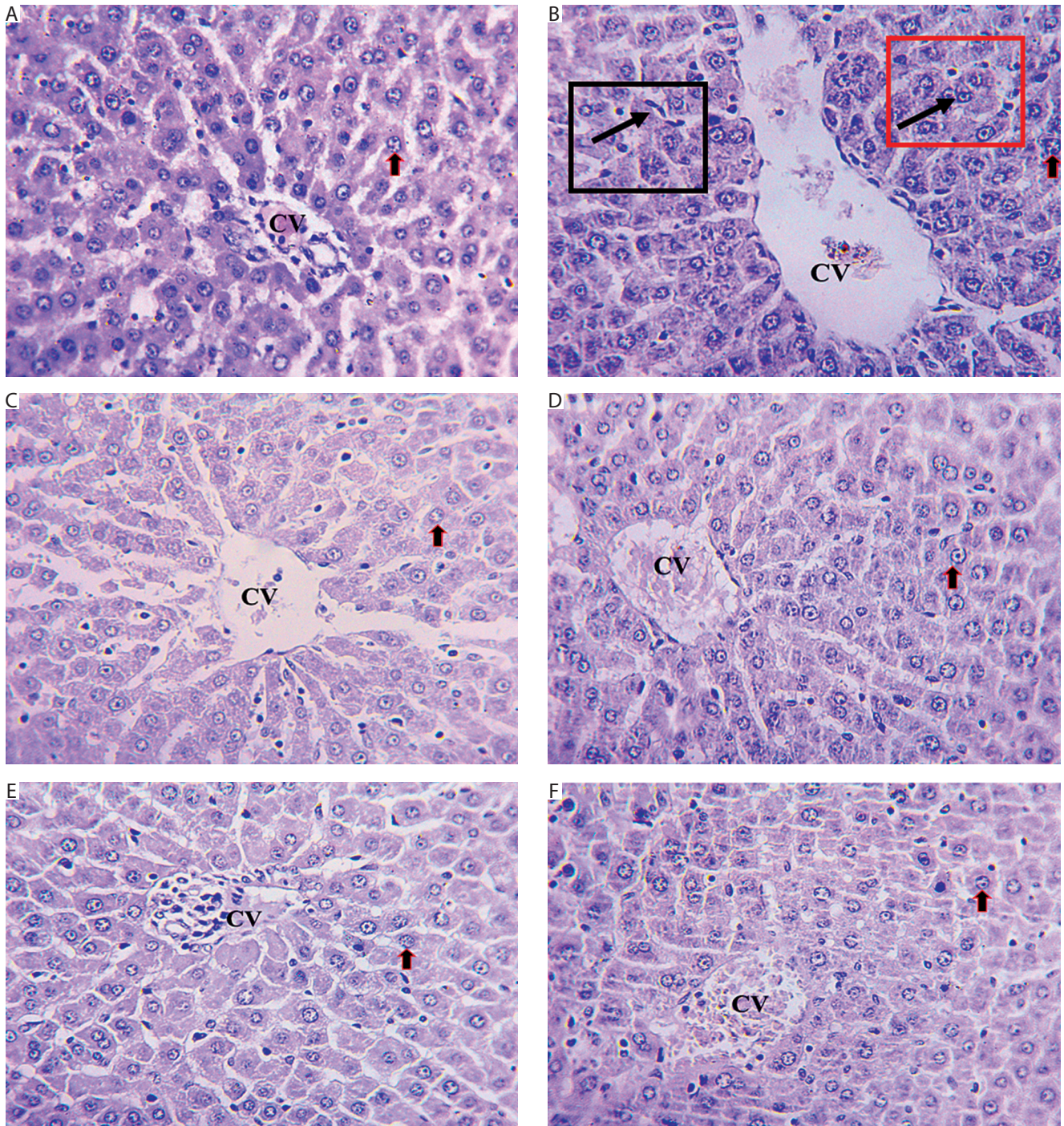
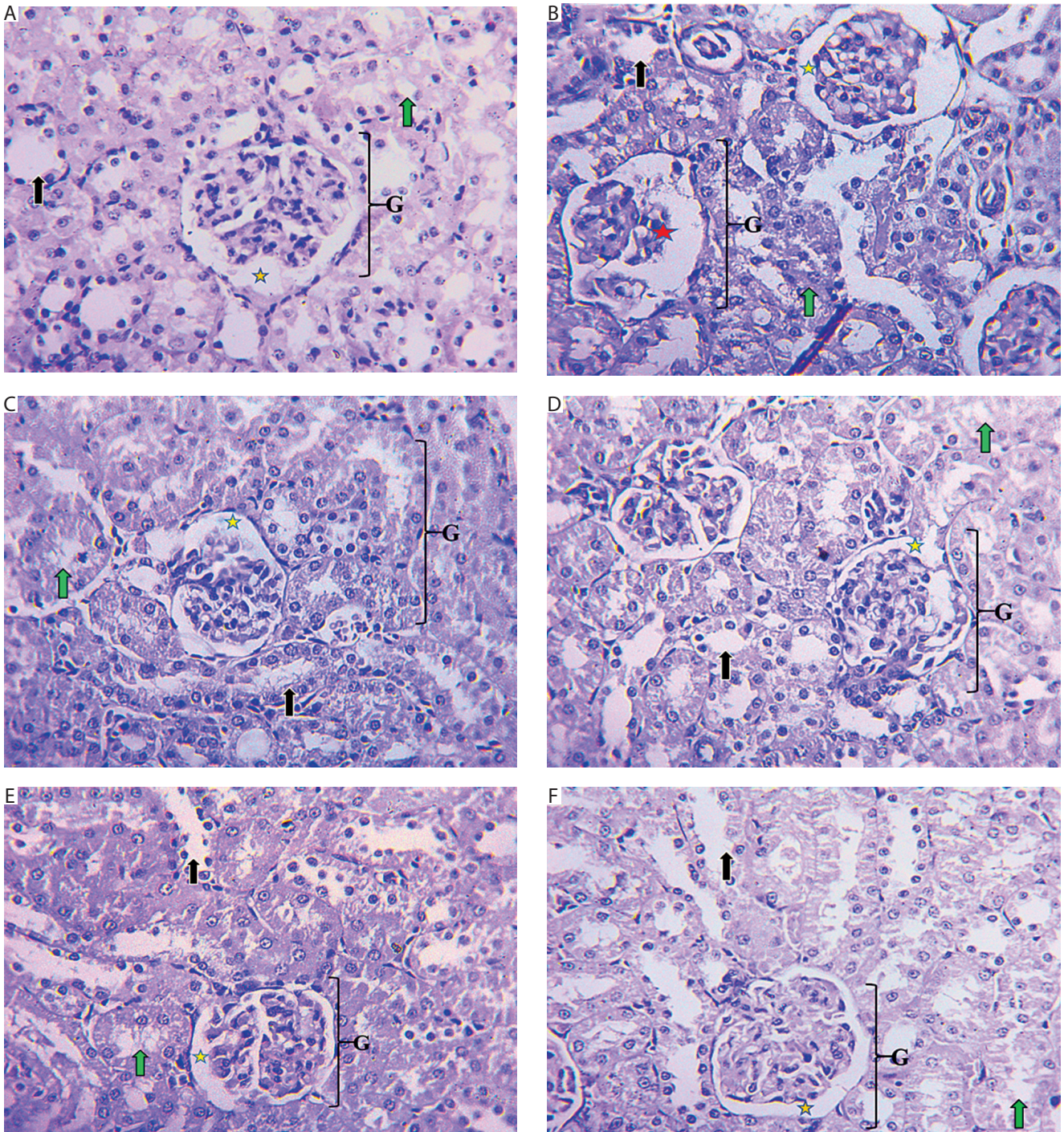


Supplementary Figures



**Supplementary Figure 1.** Representative photomicrograph images of the liver of rats. **A)** Normal control group showing no blood congestion, moderate vacuolation, and no visible lesions. **B)** Untreated diabetic group showing congestion, dilation of the central vein, vacuolar degeneration (black arrow in black box), and degenerated binucleated hepatocytes (black arrow in red box). **C)** Diabetic group treated with 25 mg/kg bw ferulic acid showing mild congestion with no nuclear fragmentation. **D)** Diabetic group treated with 50 mg/kg bw ferulic acid showing no blood congestion, mild vacuolation, and moderate loss of hepatocytes. **E)** Normal rats administered only 50 mg/kg bw ferulic acid showing moderate congestion and moderate loss of hepatocytes. **F)** Diabetic group treated with 200 mg/kg bw metformin showing moderate congestion and mild degeneration of hepatocytes. All stained with H&E (mag.  $\times 800$ ). Black arrow – hepatocytes, CV – central vein



**Supplementary Figure 2.** Representative photomicrograph images of the kidney of rats. **A)** Normal control group showing normal architecture of the glomerulus and convoluted tubules with no visible lesions. **B)** Untreated diabetic group showing severe degeneration of the glomerulus, enlargement of the urinary space, and degeneration of convoluted tubule cells. **C)** Diabetic group treated with 25 mg/kg bw ferulic acid showing shrunken glomerulus and moderate loss of convoluted tubules. **D)** Diabetic group treated with 50 mg/kg bw ferulic acid showing moderate degeneration of the glomerulus and convoluted tubules. **E)** Normal group administered 50 mg/kg bw ferulic acid showing moderate loss of convoluted tubules. **F)** Diabetic group treated with 200 mg/kg bw metformin showing moderate degeneration of the glomerulus and convoluted tubules. All stained with H&E (mag.  $\times 800$ ). G – glomerulus, black arrow – distal convoluted tubules, green arrow – proximal convoluted tubules, yellow star – urinary space